

# Carbon Steel

Hot Rolled  
Fabricated



Cor-Ten  
Solid Cut

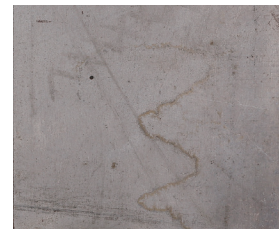


## Cor-Ten Steel - A606

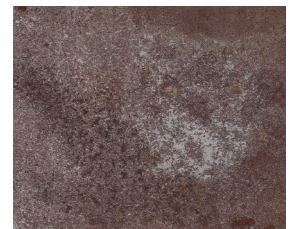
The great thing about using Cor-Ten is that it is a *weathering steel*, meaning it is a material that is corrosion resistant and left uncoated, will develop an outer layer patina protecting it from almost any weather element. Cor-Ten will develop a stable rust-like appearance after several years of exposure to weather. Protective coatings are not recommended.

## Hot Roll Steel - A36

Hot rolled steel is the most popular carbon steel, commonly used in the construction industry. Hot rolled steel is known for its industrial look. Rust will develop over time and is greatly affected by the environment. A rust inhibitor can be applied when the letters are installed in the exterior, but will need to be reapplied periodically. Protective coatings are not recommended.

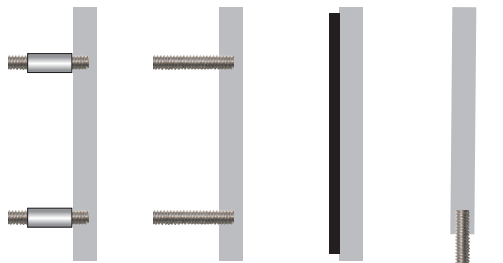


Clean



Weathered

## MOUNTING



Stud with  
Spacers

Stud

Tape

Bottom

## DETAILS

### SIZE RANGE

- Height: 4" - 48" | Depth: .5" - 6"

### SPECIFICS

- **Lifetime Guarantee** on craftsmanship
- Actual finish & color samples available
- **Tough Template™** & **Installer's Assistant™** available on all orders



Architectural Signage

Exclusively for the Sign Trade... Since 1952

LOOK CLOSE

189 Dean Street  
Norwood, MA 02062



800.322.2828 | 617.566.4079

steelartco.com