

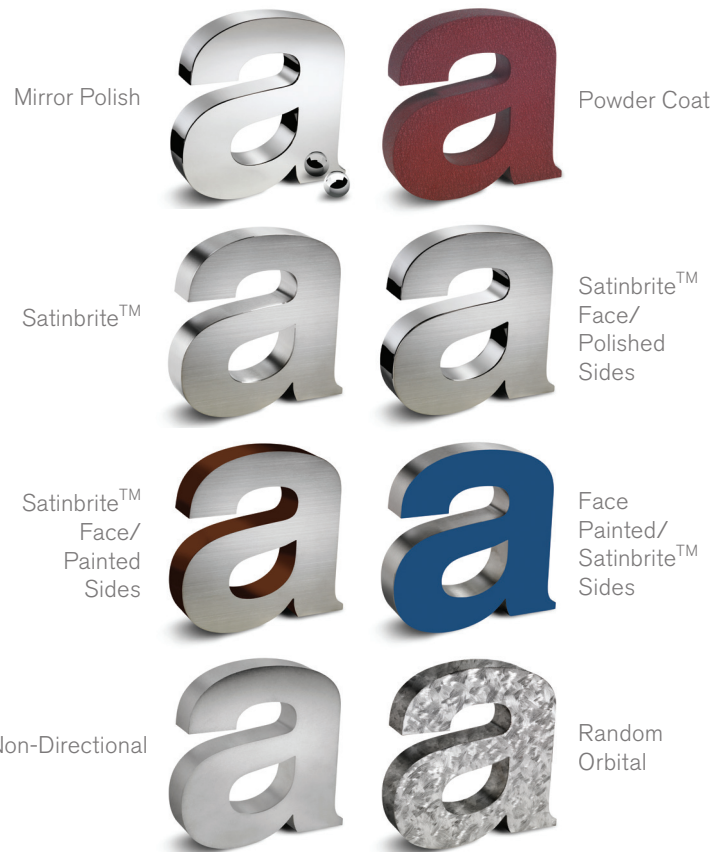
Look Close

steel art



Satin #4 Brushed
Halo Lit

Stainless Steel Fabricated Letters



Stainless Steel alloy 304 is a general purpose alloy, very durable and easy to maintain in exterior and interior applications. Alloy 316 performs better in highly corrosive, salt air environments, such as industrial, coastal vicinities or areas know for high levels of atmospheric pollution. All stainless steel products are automatically passivated when used in exterior applications, at no additional charge. This process aids in inhibiting oxidation and staining.

Size Range

- Height: 3" - 60" | Depth: 0.375" - 6"

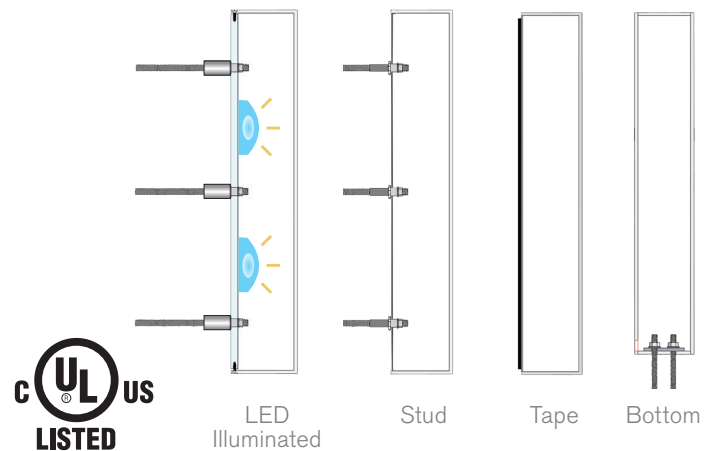
LED Illumination

- Minimum Height: 4" | Minimum Depth: 0.5" | Maximum Depth: 6"

Other Details

- **Lifetime Guarantee** on craftsmanship
- See "[UL Certification for Illuminated Letters](#)"
- Actual finish samples are available
- See "[Installation Hardware](#)"
- New [Tough Template™](#) available
- Passivation for exterior applications

MOUNTING (Closed Back Available)



steel art

Architectural Signage | Look Close

EXCLUSIVELY FOR THE SIGN TRADE

189 Dean Street
Norwood, MA 02062

800.322.2828 | 617.566.4079



steelartco.com



NuGold™
Satin Brushed
Halo Lit

Titanium coated stainless steel offers enhanced durability for exterior applications and a beautiful alternative for interiors. **NuGold™, NuBronze™, NuCopper™, Black and Medium Oxidize** are titanium coated stainless steel 304. These materials are a cost-effective alternative to brass, bronze, and copper with a **Ten Year Warranty** for exterior applications. All fabricated Titanium letters are available without a silver edge, which makes them ideal for “eye level” installations. Ask your project manager about pricing.



WITH SILVER EDGE



NO SILVER EDGE

Titanium Fabricated Letters



Size Range

- Height: 3" - 48" | Depth: 0.375" - 6"

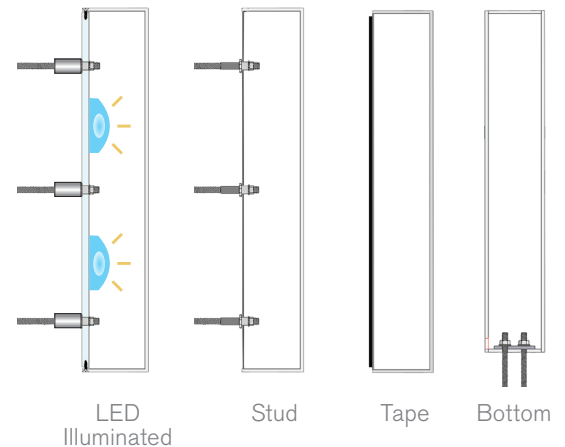
LED Illumination

- Minimum Height: 4" | Minimum Depth: 0.5" | Maximum Depth: 6"

Other Details

- **Lifetime Guarantee** on craftsmanship
- See “*UL Certification for Illuminated Letters*”
- Actual finish samples are available
- See “*Installation Hardware*”
- New **Tough Template™** available
- Passivation for exterior applications

MOUNTING *(Closed Back Available)*



Look Close

steel art



Satin
Brushed
Halo Lit

Aluminum Fabricated Letters

Bright
Aluminum
Polish
(Up to 24")



Satinbrite™

Satinbrite™
Face/
Painted
Sides



Satinbrite™
Face/
Polished
Sides

APU Paint
PMS
Matching



Powder
Coat

Non-Directional



Random
Orbital

Aluminum alloy 5052 is offered because of its strength, corrosion resistance and value. Aluminum presents a naturally beautiful luster regardless of the finish chosen. Some of the most popular options include satin, mirror polish, paint or powder coat. Natural aluminum is protected with weatherometer proven, clear interior lacquer or exterior powder coat.

Size Range

- Height: 3" - 60" | Depth: 0.375" - 6"

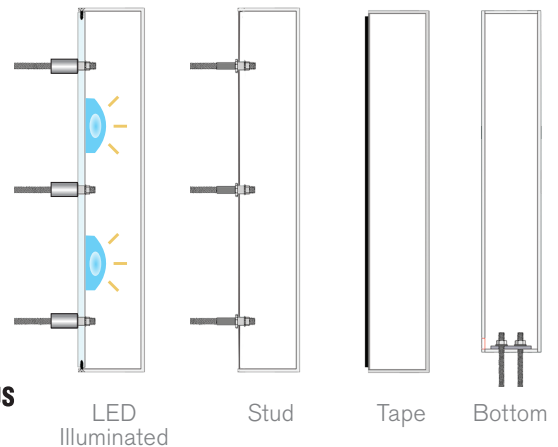
LED Illumination

- Minimum Height: 4" | Minimum Depth: 0.5" | Maximum Depth: 6"

Other Details

- **Lifetime Guarantee** on craftsmanship
- See "[UL Certification for Illuminated Letters](#)"
- Color matches by Matthews or AkzoNobel Systems (*proof samples provided*)
- Actual finish samples are available
- See "[Installation Hardware](#)"
- New [Tough Template™](#) available

MOUNTING (Closed Back Available)



steel art

Architectural Signage | Look Close

EXCLUSIVELY FOR THE SIGN TRADE

189 Dean Street
Norwood, MA 02062

800.322.2828 | 617.566.4079



steelartco.com

Look Close

steel art



Bright Satin
Brushed
Halo Lit

Aluminum presents a naturally beautiful luster. When extreme durability, architectural embellishment and "value engineering" is of major concern, these color anodized fabricated letters must be considered. Guaranteed for 15 years in exterior application and available in a myriad of architectural colors and finishes they are a fit for any project.

Anodized Aluminum Fabricated Letters



Size Range

- Height: 3" - 24" | Depth: 0.375" - 4"

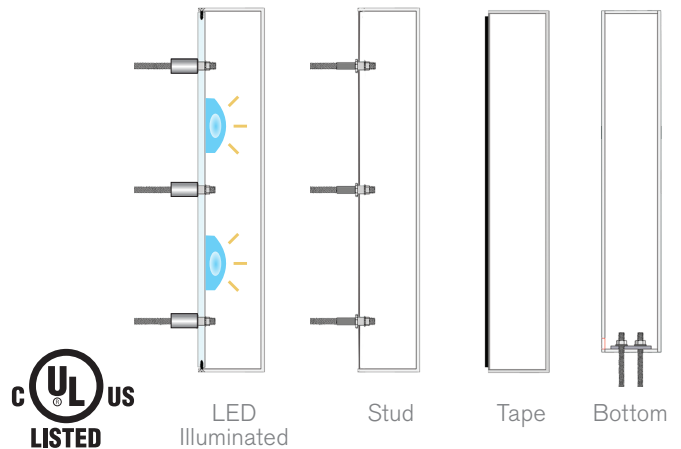
LED Illumination

- Minimum Height: 6" | Minimum Depth: 0.5" | Maximum Depth: 4"

Other Details

- **Lifetime Guarantee** on craftsmanship
- See "UL Certification for Illuminated Letters"
- Actual finish samples are available
- See "Installation Hardware"
- New Tough Template™ available

MOUNTING (Closed Back Available)



steel art

Architectural Signage | Look Close

EXCLUSIVELY FOR THE SIGN TRADE

189 Dean Street
Norwood, MA 02062

800.322.2828 | 617.566.4079



steelartco.com

Look Close

steel art



Satin
Brushed
Halo Lit

Yellow Brass alloy 260 provides a distinguished yellow gold appearance. Virtually all available finishes offer a warm architectural look in interior applications, while shades of oxidation perform well in both the interior and exterior. All yellow brass fabricated letters have a protective clear coat.

Yellow Brass Fabricated Letters



Mirror Polish

Medium
Oxidized
Satin
Brushed

Satinbrite™

Satinbrite™
Face/
Polished
Sides

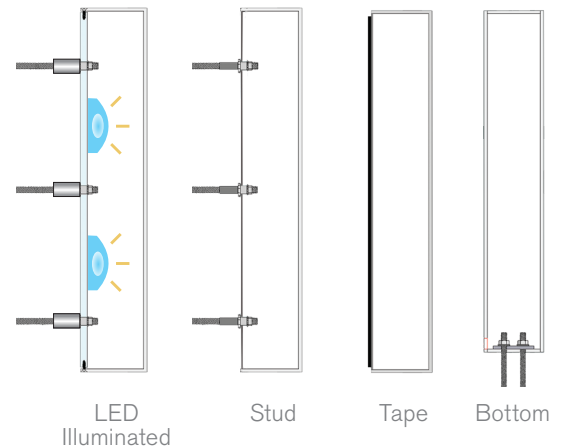
Satinbrite™
Face/
Painted
Sides

Face
Painted/
Satinbrite™
Sides

Non-Directional

Random
Orbital

MOUNTING *(Closed Back Available)*



Size Range

- Height: 3" - 36" | Depth: 0.375" - 6"

LED Illumination

- Minimum Height: 4" | Minimum Depth: 0.5" | Maximum Depth: 6"

Other Details

- **Lifetime Guarantee** on craftsmanship
- See "UL Certification for Illuminated Letters"
- Actual finish samples are available - See "Metal Finishes"
- See "Installation Hardware"
- New Tough Template™ available

steel art

Architectural Signage | Look Close

EXCLUSIVELY FOR THE SIGN TRADE

189 Dean Street
Norwood, MA 02062

800.322.2828 | 617.566.4079



steelartco.com



Satin
Brushed
Halo Lit

Brass Fabricated Letters



Mirror Polish

Medium
Oxidized
Satin
Brushed

Satinbrite™

Satinbrite™
Face/
Polished
Sides

Satinbrite™
Face/
Painted
Sides

Random
Orbital

Non-Directional

Face
Painted/
Satinbrite™
Sides

Brass alloy 280 provides a distinguished gold appearance. Virtually all available finishes offer a warm architectural look in interior applications, while shades of oxidation perform well in both the interior and exterior. All brass fabricated letters have a protective clear coat.

Size Range

- Height: 3" - 36" | Depth: 0.375" - 6"

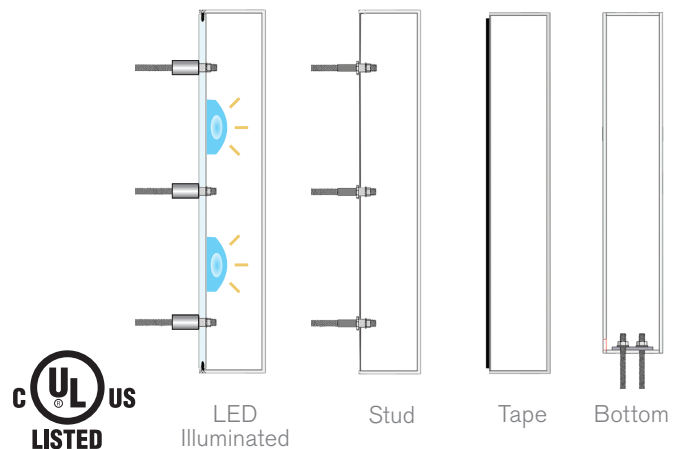
LED Illumination

- Minimum Height: 4" | Minimum Depth: 0.5" | Maximum Depth: 6"

Other Details

- **Lifetime Guarantee** on craftsmanship
- See "[UL Certification for Illuminated Letters](#)"
- Actual finish samples are available
- See "[Installation Hardware](#)"
- New [Tough Template™](#) available

MOUNTING (Closed Back Available)



LED
Illuminated

Stud

Tape

Bottom

Look Close

steel art



Satin
Brushed
Halo Lit

Bronze Fabricated Letters



Mirror Polish

Medium
Oxidized
Satin
Brushed



Satinbrite™

Satinbrite™
Face/
Polished
Sides



Satinbrite™
Face/
Painted
Sides

Face
Painted/
Satinbrite™
Sides



Non-Directional

Random
Orbital

Bronze alloy 220 provides a distinguished reddish gold appearance. Virtually all available finishes offer a warm architectural look in interior applications, while shades of oxidation perform well in both the interior and exterior. All bronze fabricated letters have a protective clear coat.

Size Range

- Height: 3" - 36" | Depth: 0.375" - 6"

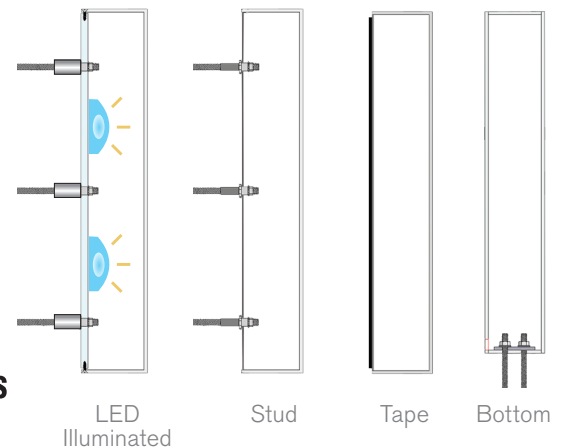
LED Illumination

- Minimum Height: 4" | Minimum Depth: 0.5" | Maximum Depth: 6"

Other Details

- **Lifetime Guarantee** on craftsmanship
- See "UL Certification for Illuminated Letters"
- Actual finish samples are available
- See "Installation Hardware"
- New Tough Template™ available

MOUNTING (Closed Back Available)



steel art

Architectural Signage | Look Close

EXCLUSIVELY FOR THE SIGN TRADE

189 Dean Street
Norwood, MA 02062

800.322.2828 | 617.566.4079



steelartco.com

Look Close

steel art



Satin
Brushed
Halo Lit

Copper Fabricated Letters



Copper alloy 110 provides a distinguished reddish appearance. Virtually all available finishes offer a warm architectural look in interior applications, while shades of oxidation perform well in both the interior and exterior. All copper fabricated letters have a protective clear coat.

Size Range

- Height: 3" - 36" | Depth: 0.375" - 6"

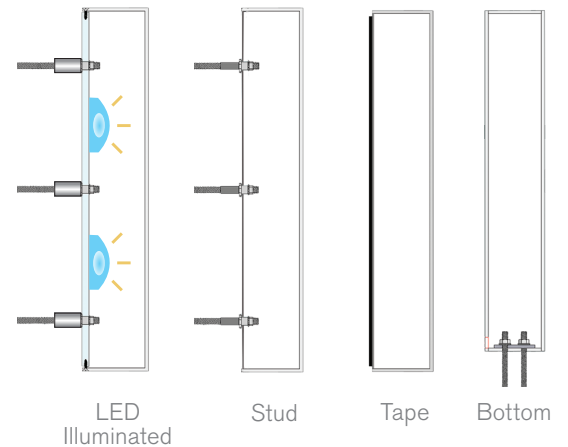
LED Illumination

- Minimum Height: 4" | Minimum Depth: 0.5" | Maximum Depth: 6"

Other Details

- **Lifetime Guarantee** on craftsmanship
- See "[UL Certification for Illuminated Letters](#)"
- Actual finish samples are available
- See "[Installation Hardware](#)"
- New [Tough Template™](#) available

MOUNTING *(Closed Back Available)*



steel art

Architectural Signage | Look Close

EXCLUSIVELY FOR THE SIGN TRADE

189 Dean Street
Norwood, MA 02062

800.322.2828 | 617.566.4079



steelartco.com